



Fabrics are the
easiest and most
sophisticated way
to express
ourselves

sagal  creating
inspirational
spaces

Through all our collections, fabrics are the easiest and most sophisticated way to express ourselves through pattern, color, and texture. The materials become a language capable of transmitting messages about identity, thought and culture. When products are dressed in an exclusive way, they become more expressive and sophisticated while elevating their quality.

Enjoy this collection of some of our favourite soft furnishings finished in a brand new collection of fabrics from Rubelli.

www.sagalgroup.co.uk



CLUB



RUBELLI PERÙ (MUSCHIO / MOSS 05) - STRUTTURA / BASE (NERO OPACO / MATT BLACK V6)



XAXA



BASE MARMO CARRARA / CARRARA MARBLE BASE (MA) - PIANO GOLD LUCIDO / POLISHED GOLD TOP



NEW YORK



VELLUTO / VELVET VELOURS (TABACCO / TOBACCO 707)
STRUTTURA LEGNO ROVERE / OAK WOOD BASE (MOKA / MOKA E1)

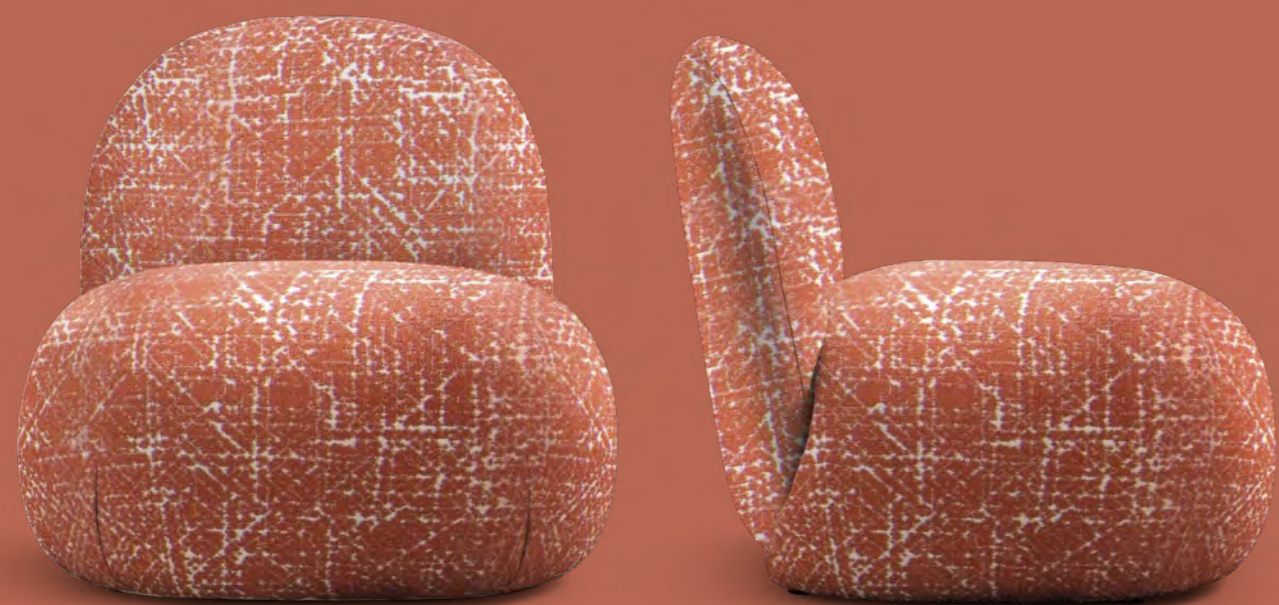
GINEVRA



RUBELLI DECONTRACTÉ (AVORIO / IVORY 07) - STRUTTURA SATINATA / SATIN BASE (INOX G7)



HILL





HILL





HILL



BOUQUET (AVORIO / IVORY 01/01)

DEEP ONE



COCON (AVORIO / IVORY R-10) - PELLE / LEATHER PREMIUM (OCRA / OCHER 308)



STRUTTURA SATINATA / SATIN BASE (ORO / GOLD G2) - PIANO MARMO CALACATTA / CALACATTA MARBLE TOP

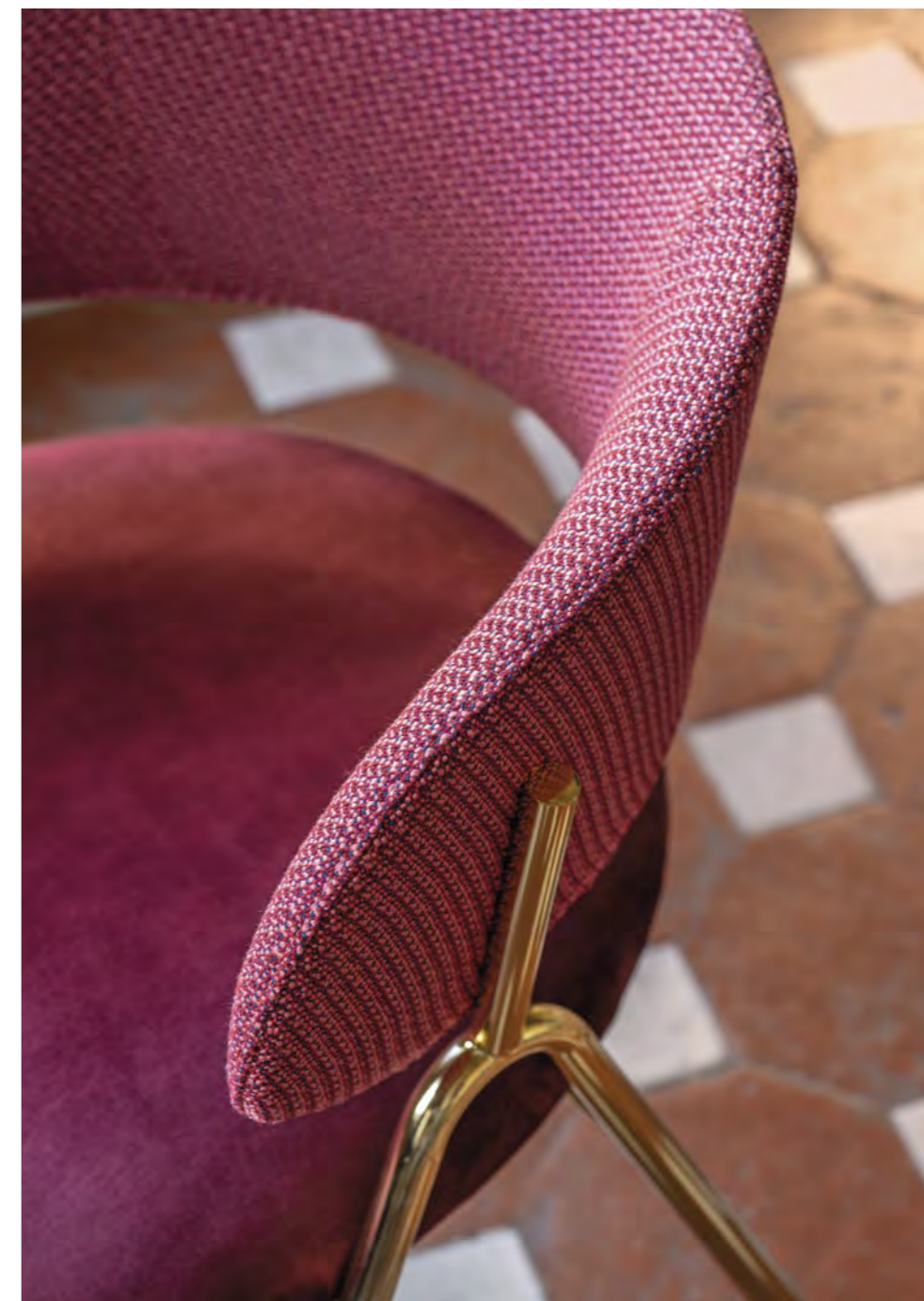


JOLLY





KEIRA



RUBELLI CROQUETTE (LAMPONE / RASPBERRY 5-13) - VELLUTO / VELVET VELOURS
(RUBINO / RUBY RED 709) - STRUTTURA / BASE (GOLD / GOLD G2)

KEIRA

RUBELLI CROQUETTE (ASSENZIO / ABSINTHE 5-08) - VELLUTO / VELVET VELOURS
(PETROLIO / PETROIL 711) - STRUTTURA CROMO / CHROME BASE (GOLD G2)





KEIRA



COCON (FUMO / SMOKE R20) - STRUTTURA / BASE (NERO OPACO / MATT BLACK V6)

ARWA



RUBELLI CROQUETTE (CACHI / KHAKI 5-06) - VELLUTO / VELVET VELOURS (ORO / GOLD 706)
LEGNO ROVERE / OAK WOOD (MOKA E1) - PUNTALI GOLD SATIN / GOLD SATIN CAP





ARWA



ARWA



RUBELLI CROQUETTE (BLU / BLUE 5-1 6) - VELLUTO / VELVET VELOURS (TERRA / EARTH 702)
LEGNO ROVERE / OAK WOOD (MOKA E1) - PUNTALI GOLD SATIN / GOLD SATIN CAP





ANNA



RUBELLI PERÙ (CORALLO / CORAL 04)
VELLUTO / VELVET VELOURS (RUBINO / RUBY RED 709)

ANNA



OLGA



RUBELLI DECONTRACTÉ (CELADON 012) - STRUTTURA / BASE (GOLD V5)

RUBELLI DECONTRACTÉ (AVORIO / IVORY 007) - STRUTTURA / BASE (RAME / COPPER 5V)



RUBELLI DECONTRACTÉ (ARTICO / ARTIC 016) - BASE / BASE (NERO OPACO / MATT BLACK V6)



LEVEL





HIP



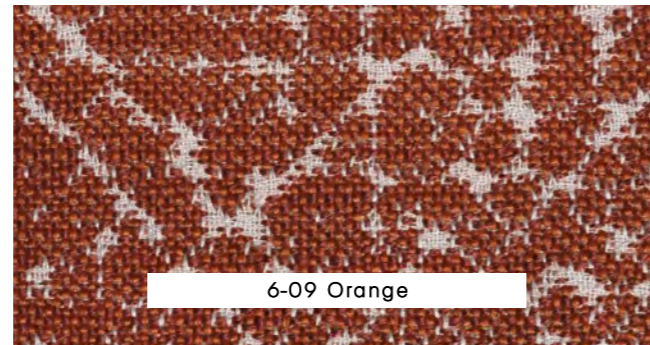
ONE RECYCLED (BOSCO / WOOD 030) - CUSCINI / CUSHIONS KVADRAT STEELCUT
(VERDE / GREEN 946/S194) - STRUTTURA / BASE (NERO OPACO / MATT BLACK V6)

Diecielode - Rubelli

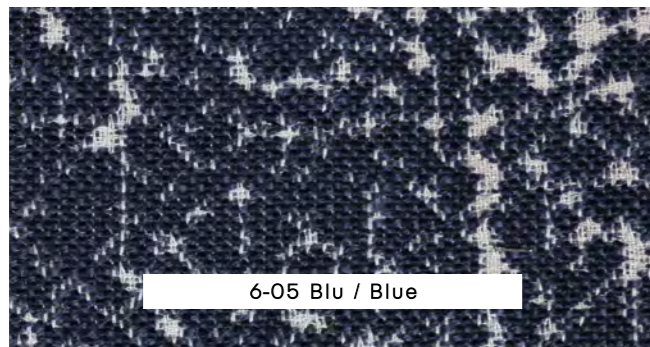
CL1 | MARTINDALE 60.000 | OUTDOOR USE



6-01 Avorio / Ivory



6-09 Orange



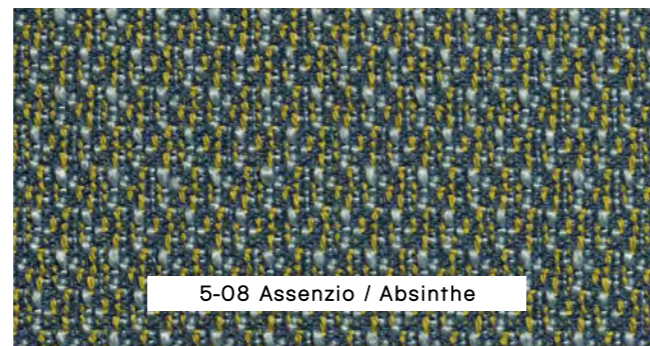
6-05 Blu / Blue

Croquette - Rubelli

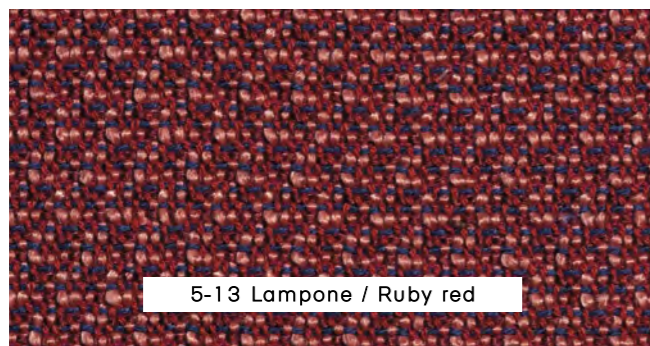
CL1 | MARTINDALE 60.000 | OUTDOOR USE



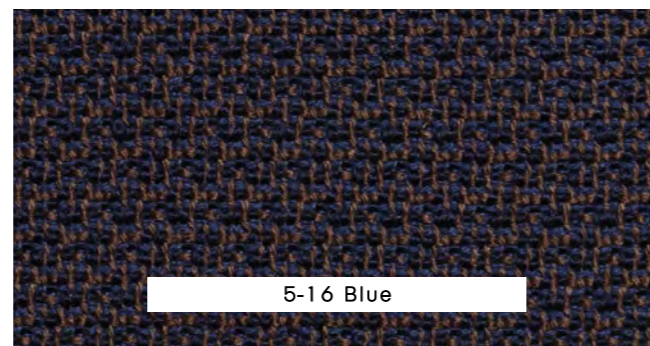
5-06 Cachi / Khaki



5-08 Assenzio / Absinthe



5-13 Lampone / Ruby red



5-16 Blue

Perù - Rubelli

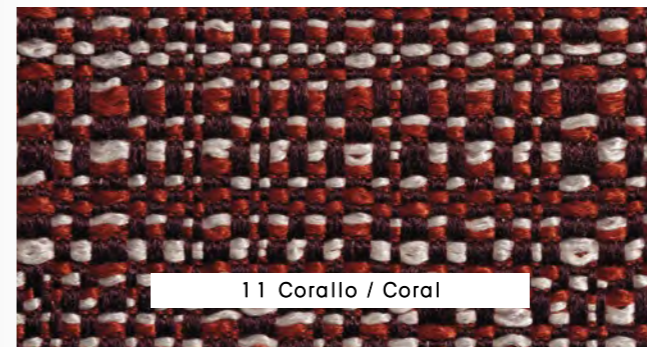
CL1 | MARTINDALE 70.000 | OUTDOOR USE



02 Paglia / Straw



07 Pesca / Peach



11 Corallo / Coral



05 Muschio / Moss

Bouquet

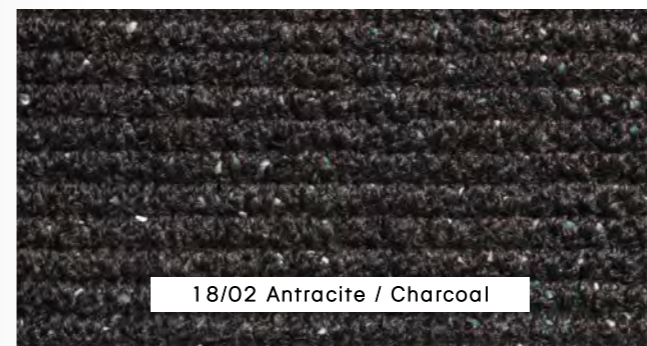
CL1 | OEKO-TEX | MARTINDALE 25.000



01/01 Avorio / Ivory



03/09 Smoke



18/02 Antracite / Charcoal



GilbertiStudio / Foto Savorelli / Stampa Grafiche Antiga